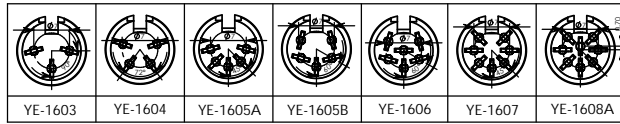
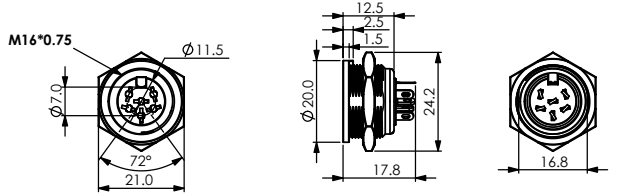
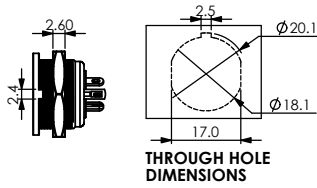


YE-160X DIN SOCKET PANEL MOUNT SCREW LOCKING



MATERIAL :

1. SHIELD COVER : Zn ALLOY NICKEL PTD.
2. GND CONT. : COPPER NICKEL PTD.
3. SCREW NUT : BRASS NICKEL PTD.
4. HOUSING : PA66
5. TERMINALS : BRASS SILVER PTD.

SPECIFICATION :

Rating : 100V AC 1A max.

Contact Resistance :

Pins 30mΩ max.

Shell 50mΩ max.

Insulation Resistance :

100MΩ at 500V DC min.

Voltage Withstand :

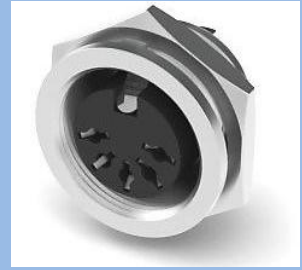
250V AC for 1 minute



YE-1603



YE-1604



YE-1605A



YE-1605B



YE-1606



YE-1607



YE-1608A